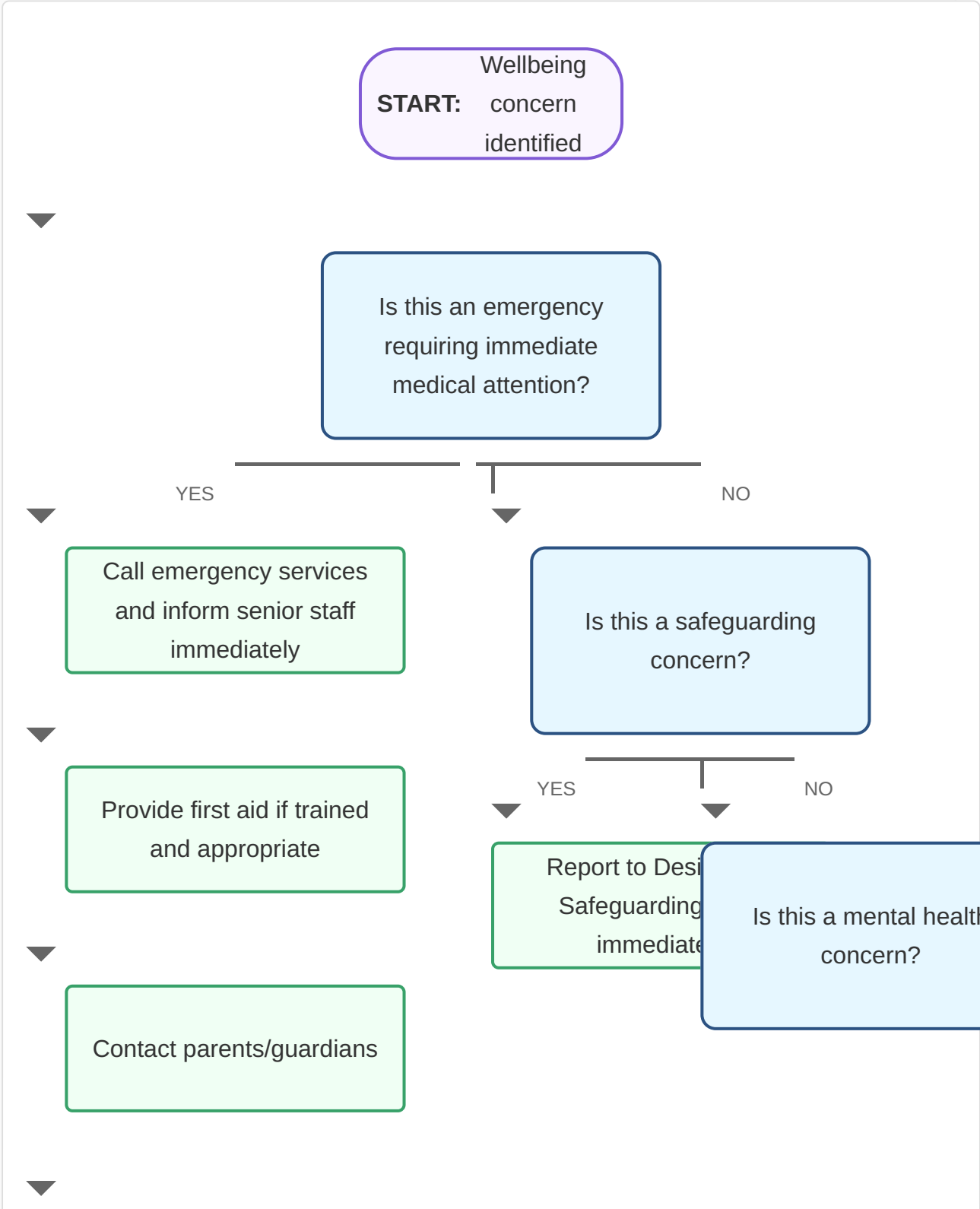


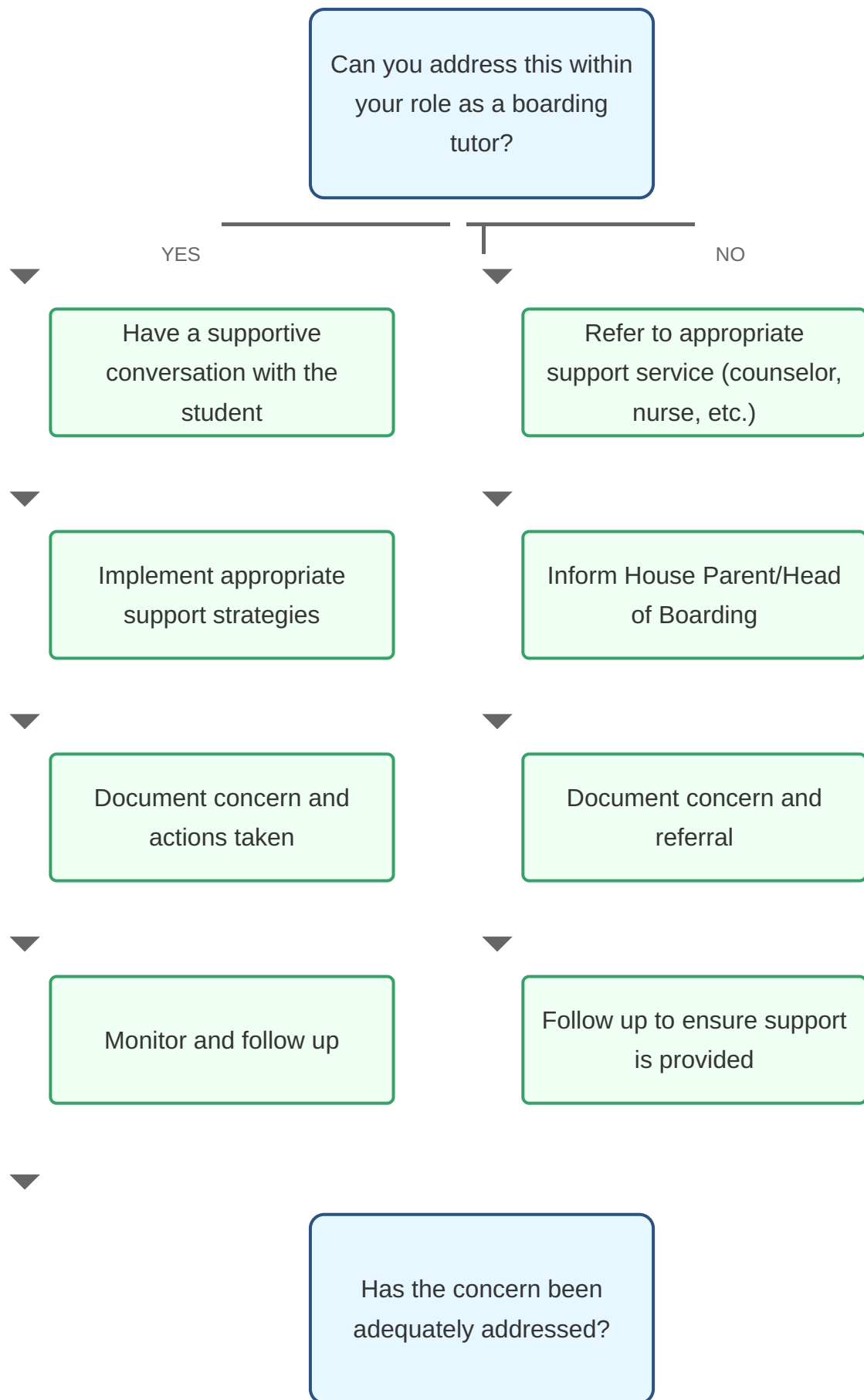
# Boarding Tutor Decision Trees and Flowcharts

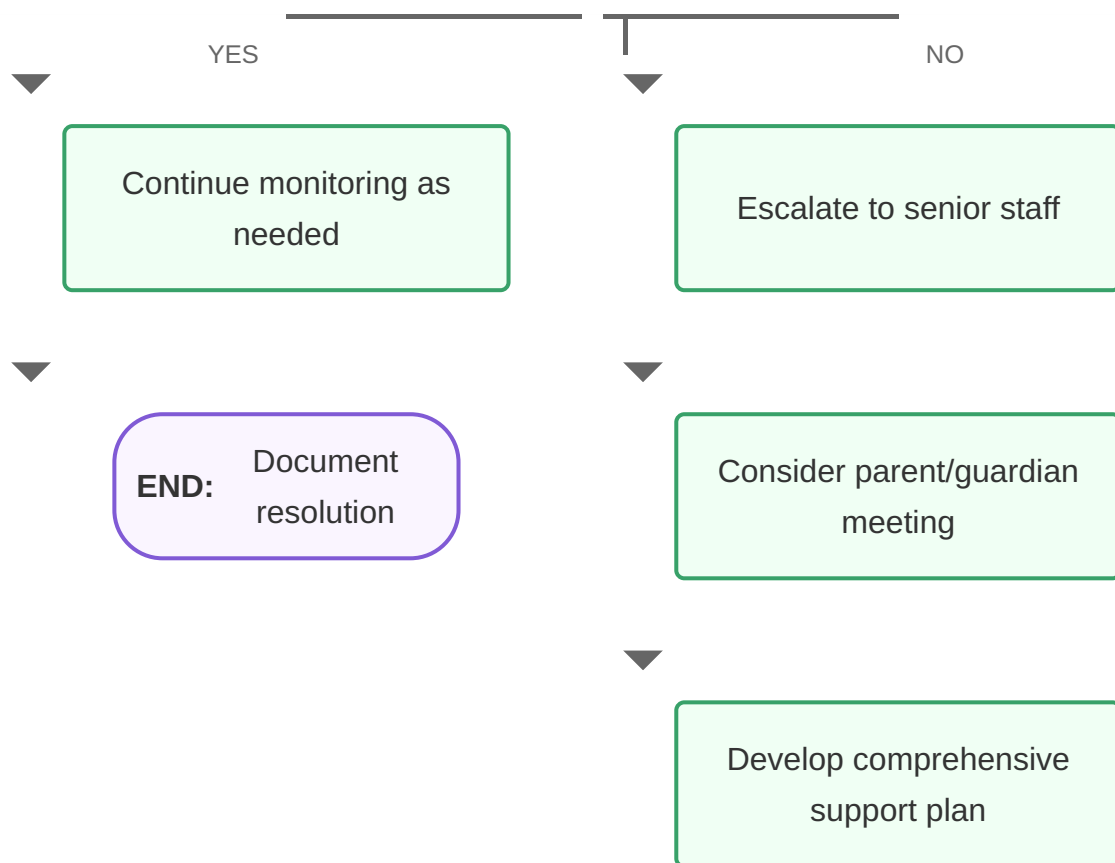
---

# 1. Student Wellbeing Concern Response

This flowchart guides boarding tutors through the process of responding to student wellbeing concerns.





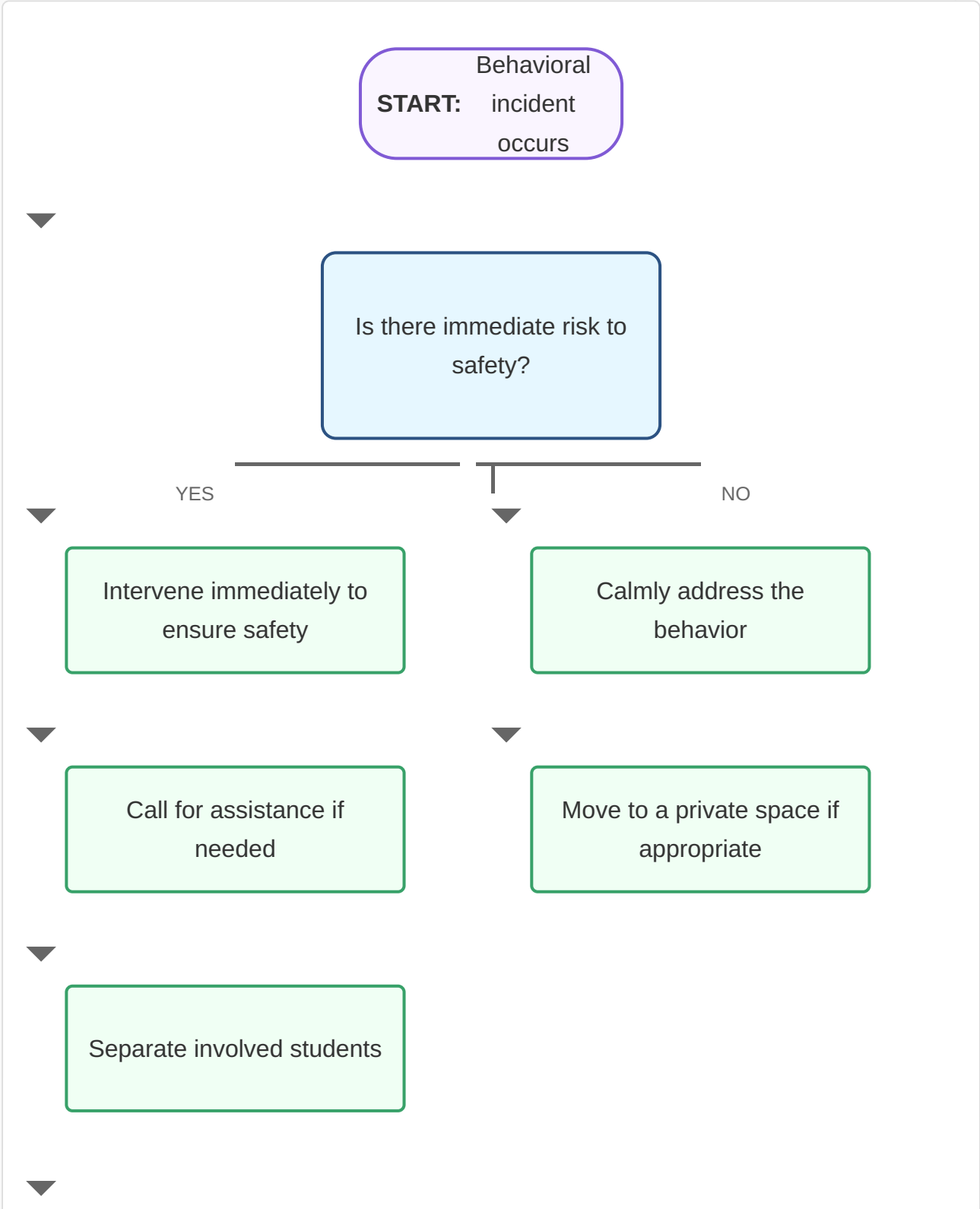


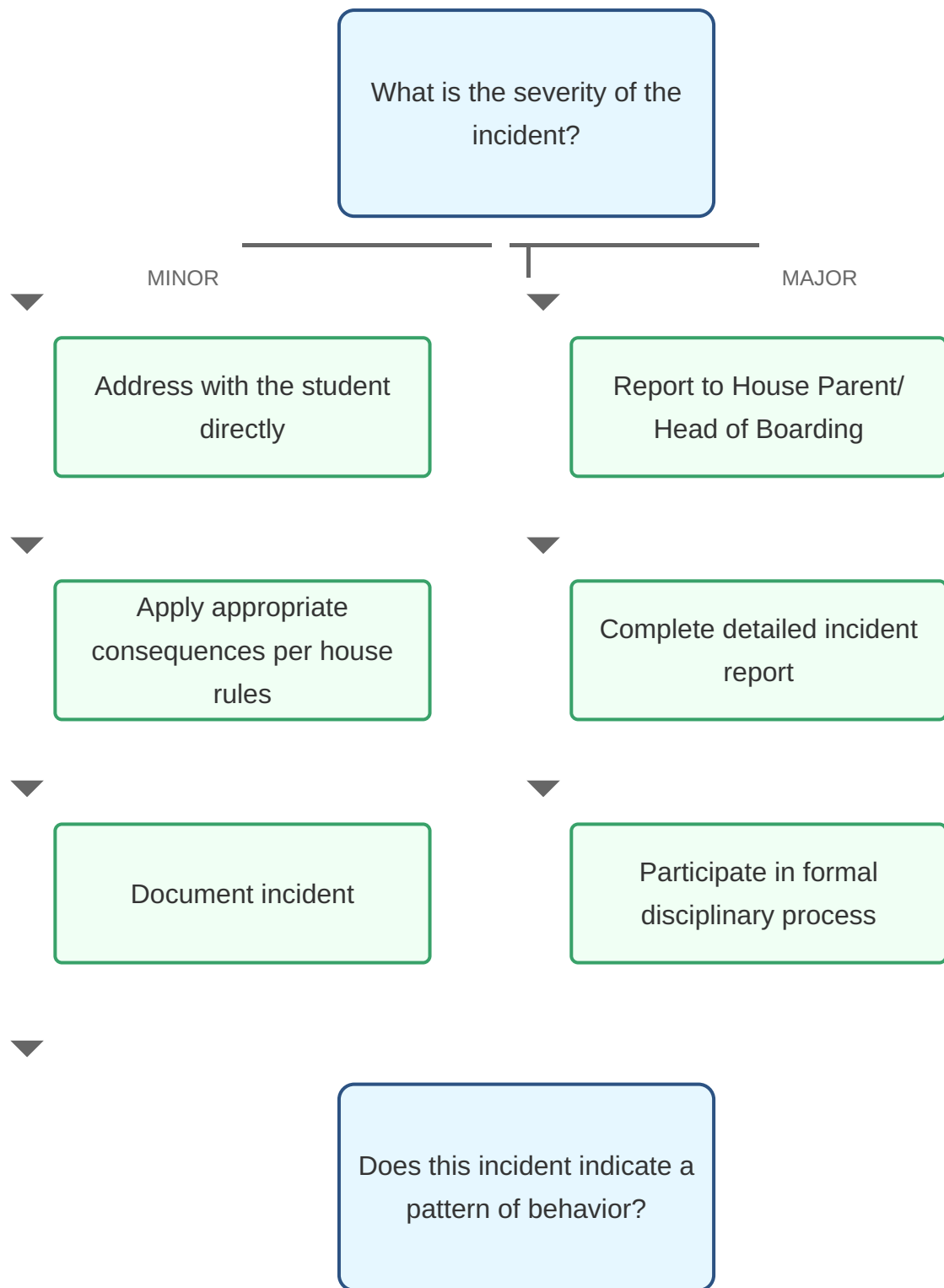
**Notes:**

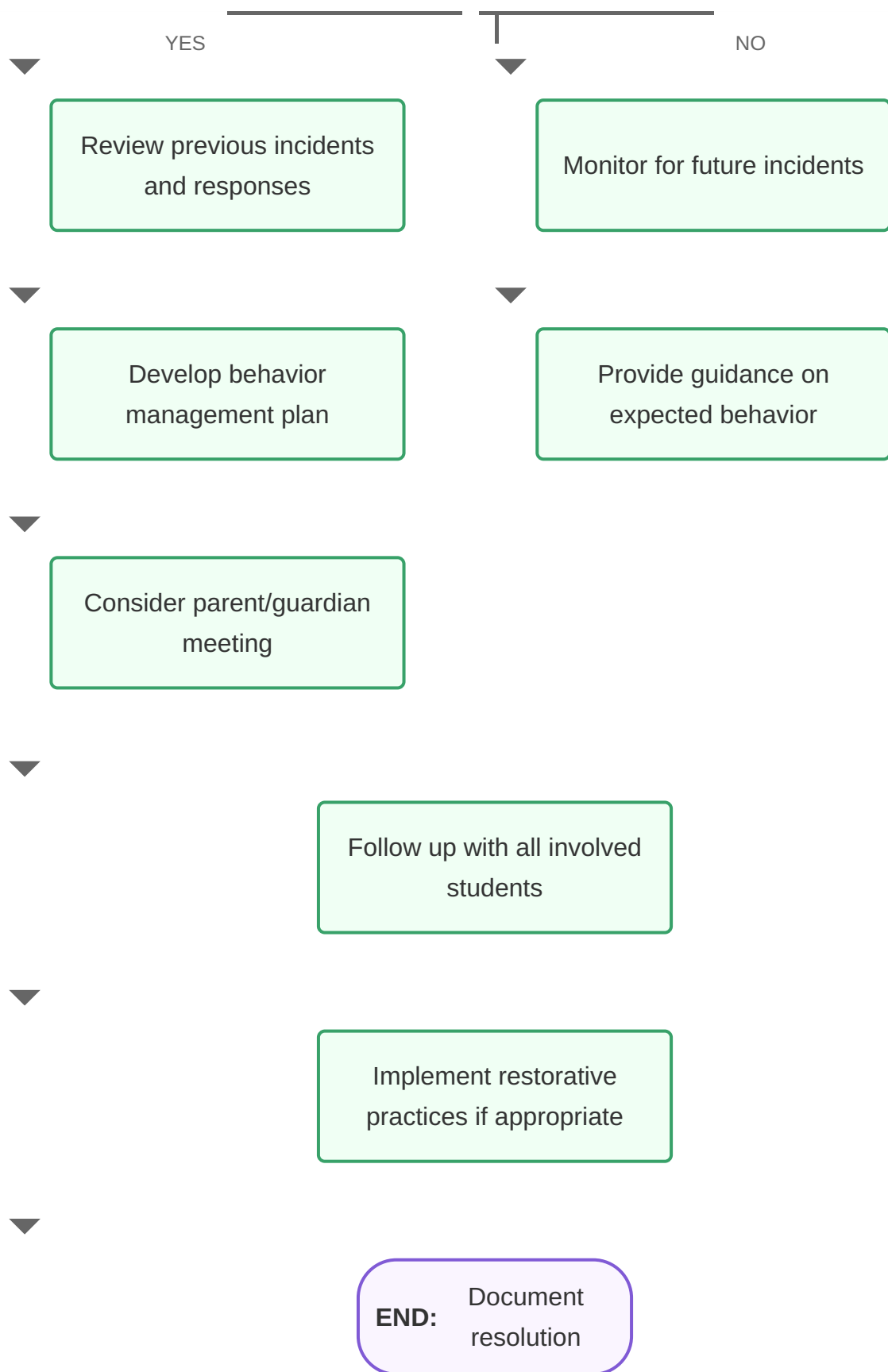
- *Always prioritize student safety and wellbeing*
- *Document all concerns and actions taken*
- *Maintain appropriate confidentiality while following safeguarding procedures*
- *Consult your school's specific policies for detailed guidance*

## 2. Behavioral Incident Response

This flowchart guides boarding tutors through the process of responding to behavioral incidents in the boarding house.







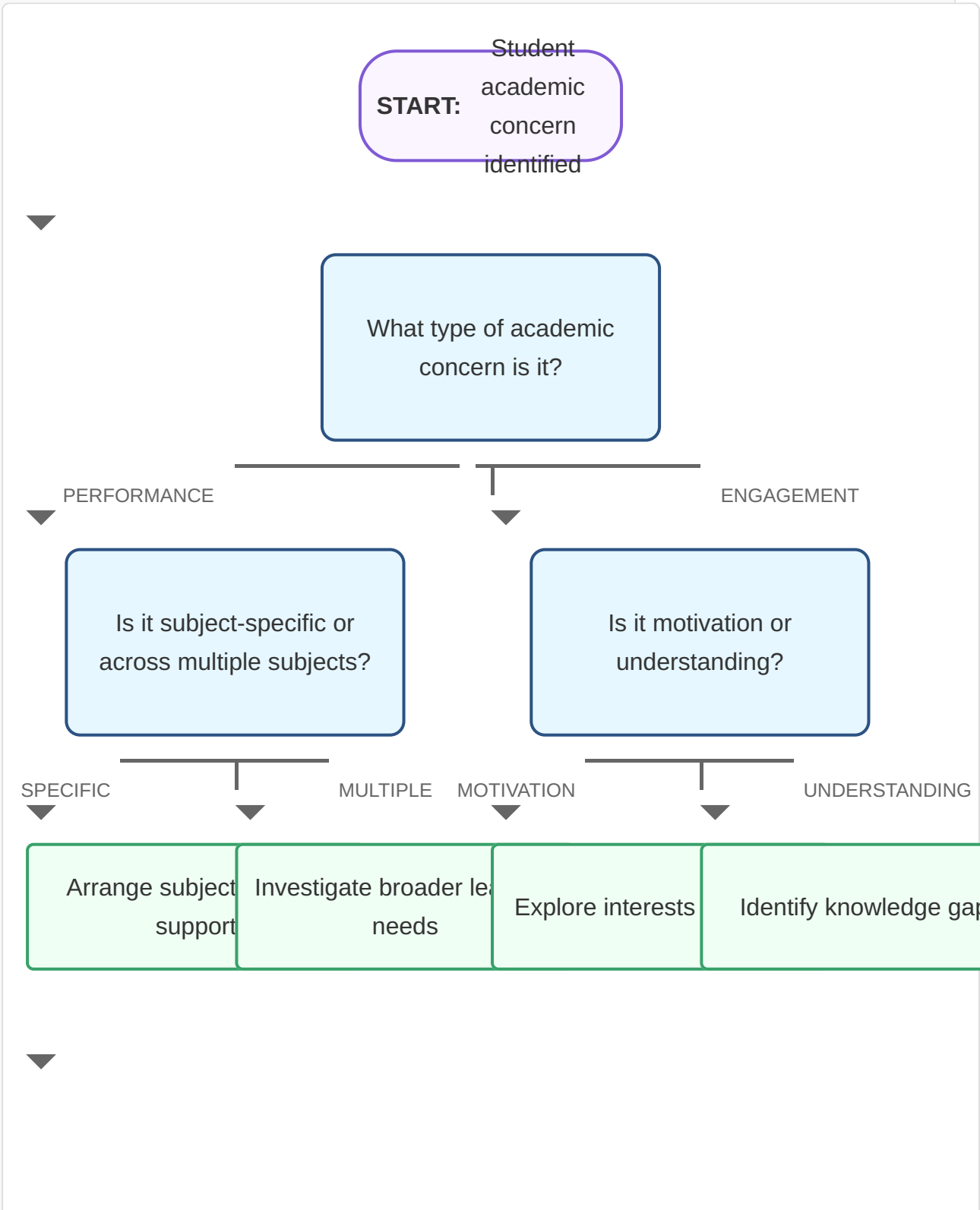
**Notes:**

- *Always remain calm and professional when addressing behavioral incidents*
- *Focus on the behavior, not the student's character*
- *Consider cultural differences and individual circumstances*
- *Ensure consequences are fair, consistent, and proportionate*
- *Use incidents as opportunities for student growth and learning*



### 3. Academic Support Decision Tree

This decision tree helps boarding tutors determine appropriate academic support strategies for students.



What level of support is needed?

LIGHT

MODERATE

INTENSIVE

Provide guidance during study time

Schedule regular tutoring sessions

Refer to learning support department

Check in regularly on progress

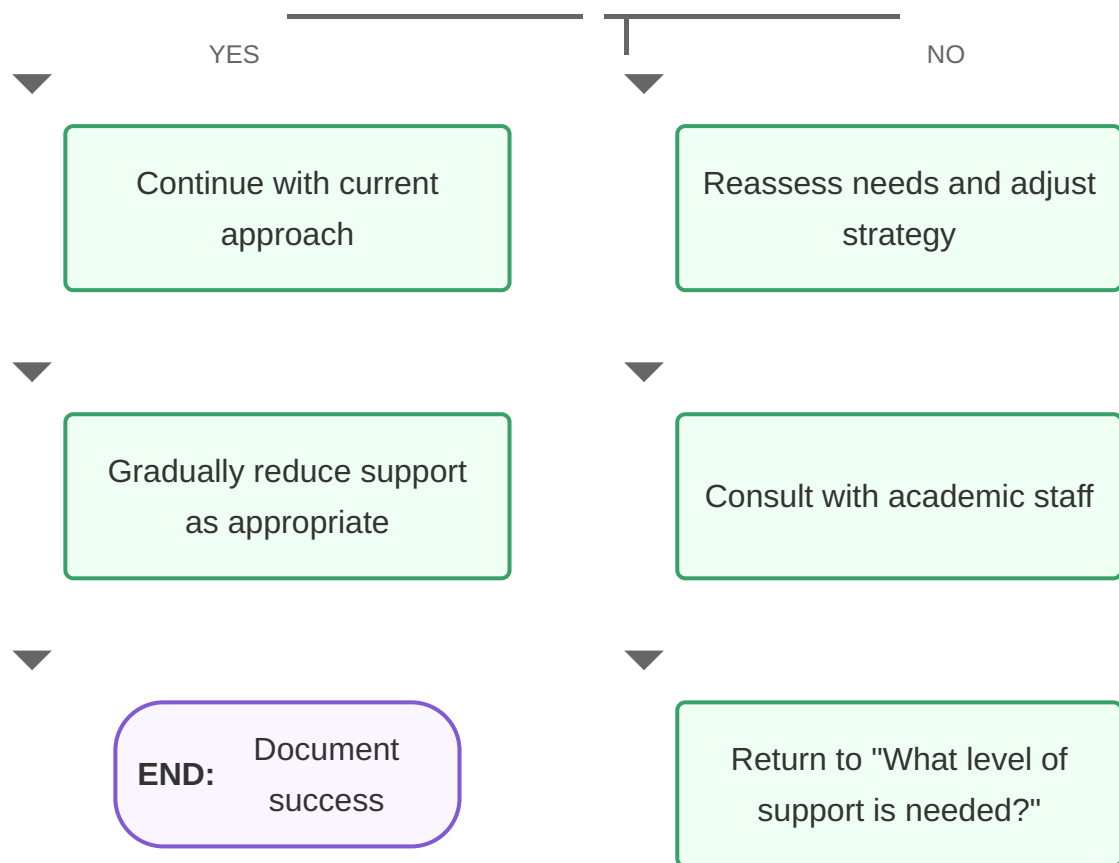
Develop structured study plan

Consider formal assessment

Implement support strategy

Monitor progress and adjust as needed

Is the support strategy effective?

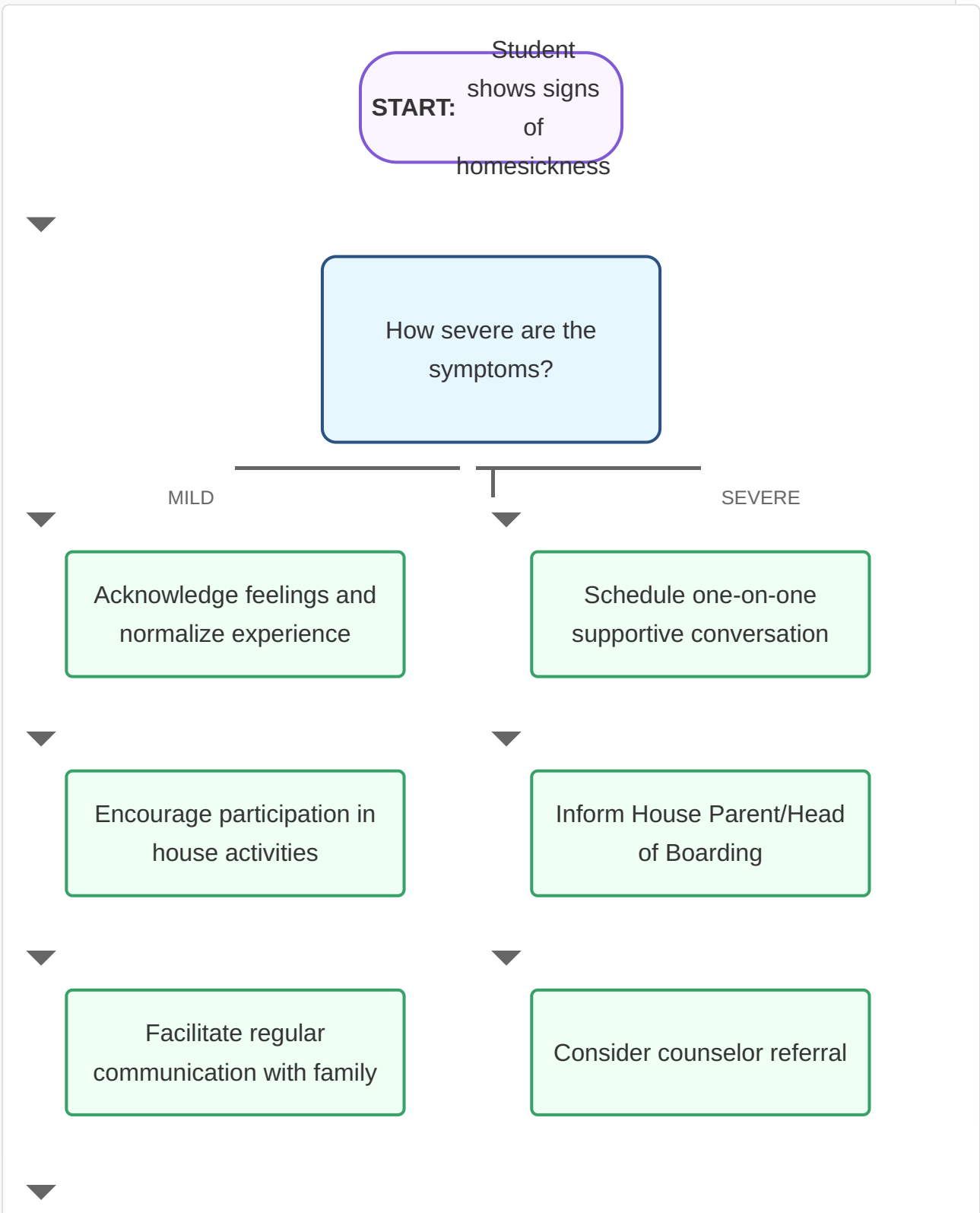


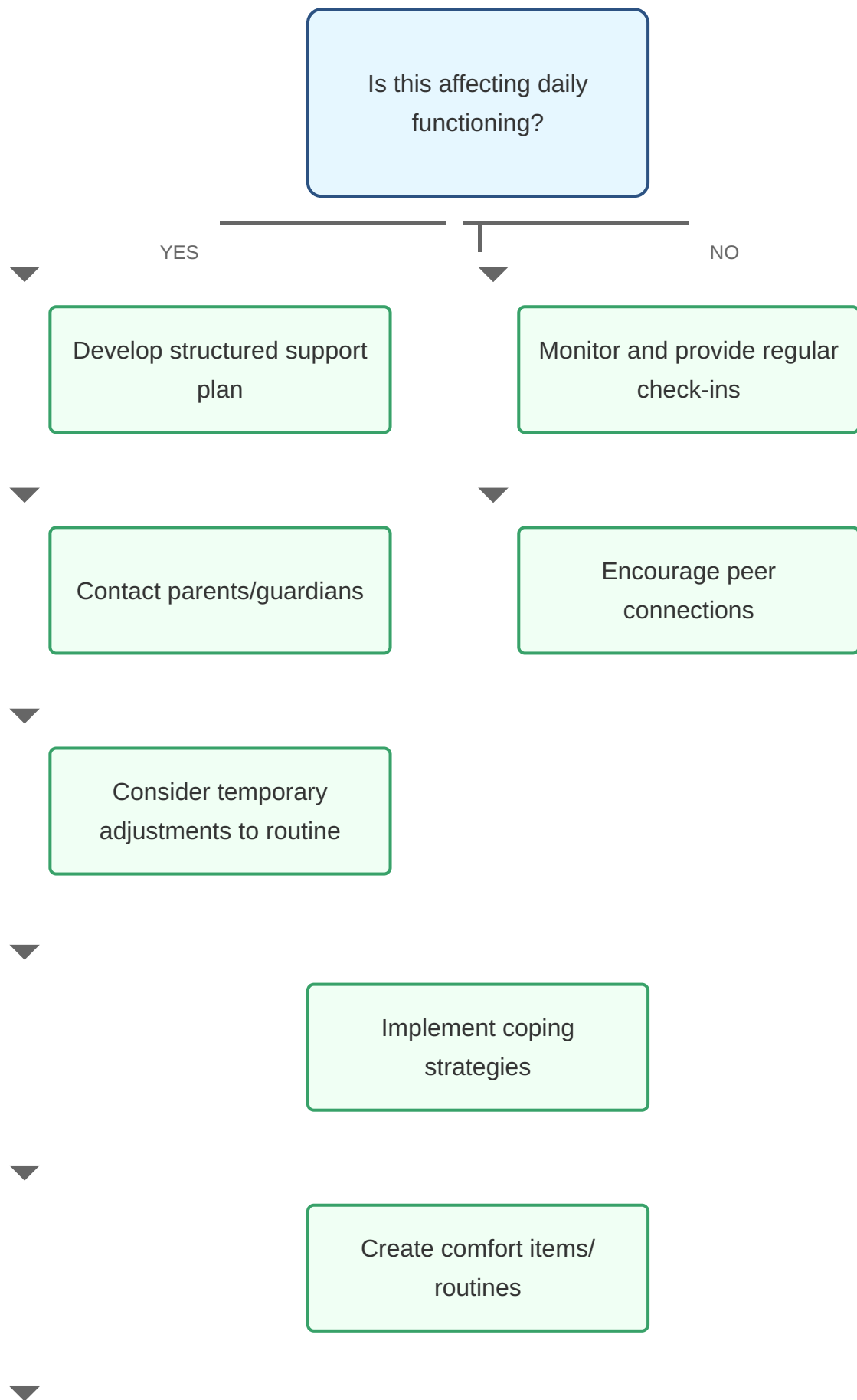
**Notes:**

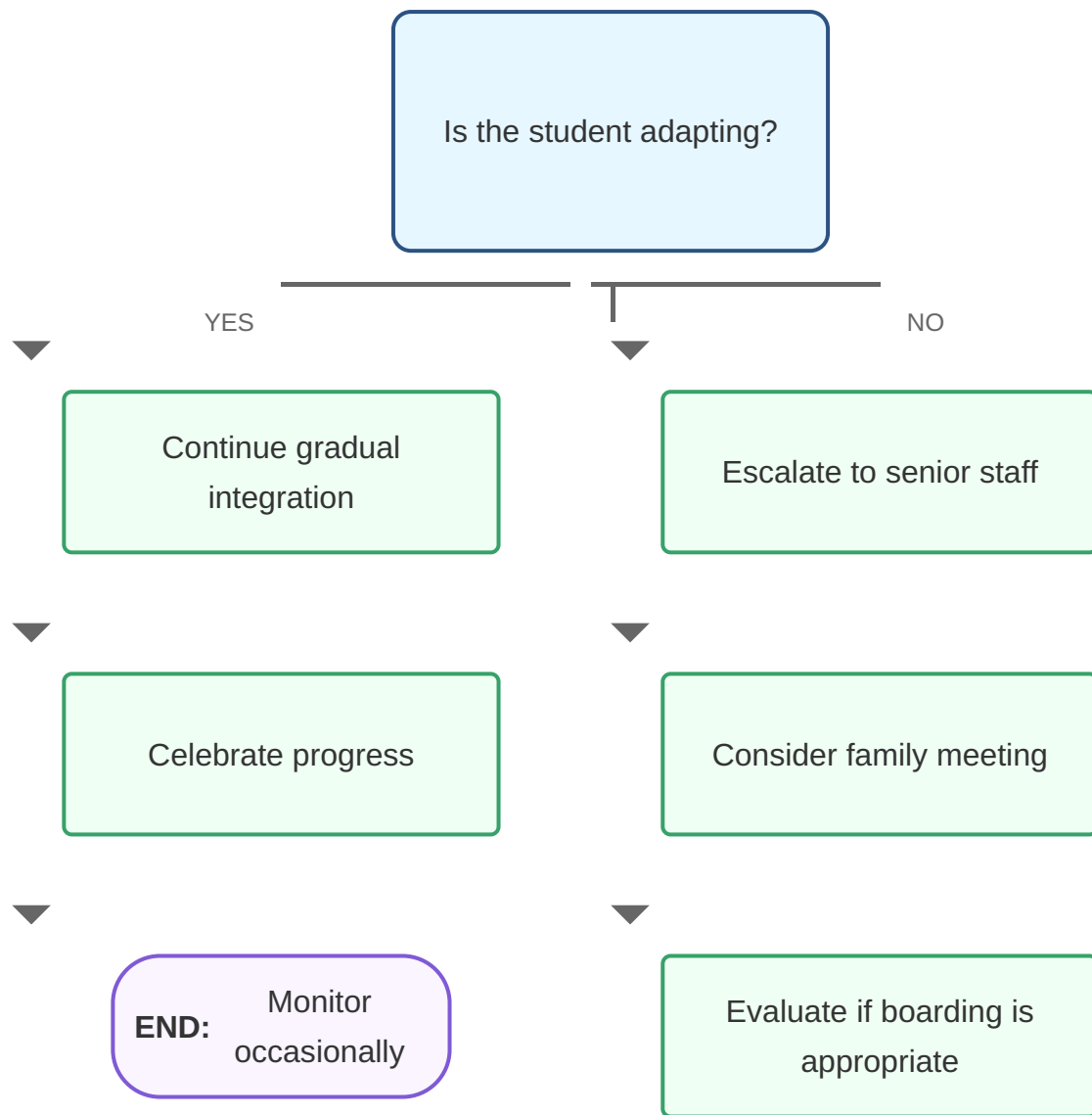
- *Focus on building student independence and self-regulation*
- *Regularly communicate with subject teachers*
- *Consider learning styles and preferences*
- *Document strategies used and their effectiveness*
- *Celebrate progress and improvements*

## 4. Homesickness Response Protocol

This flowchart guides boarding tutors through supporting students experiencing homesickness.





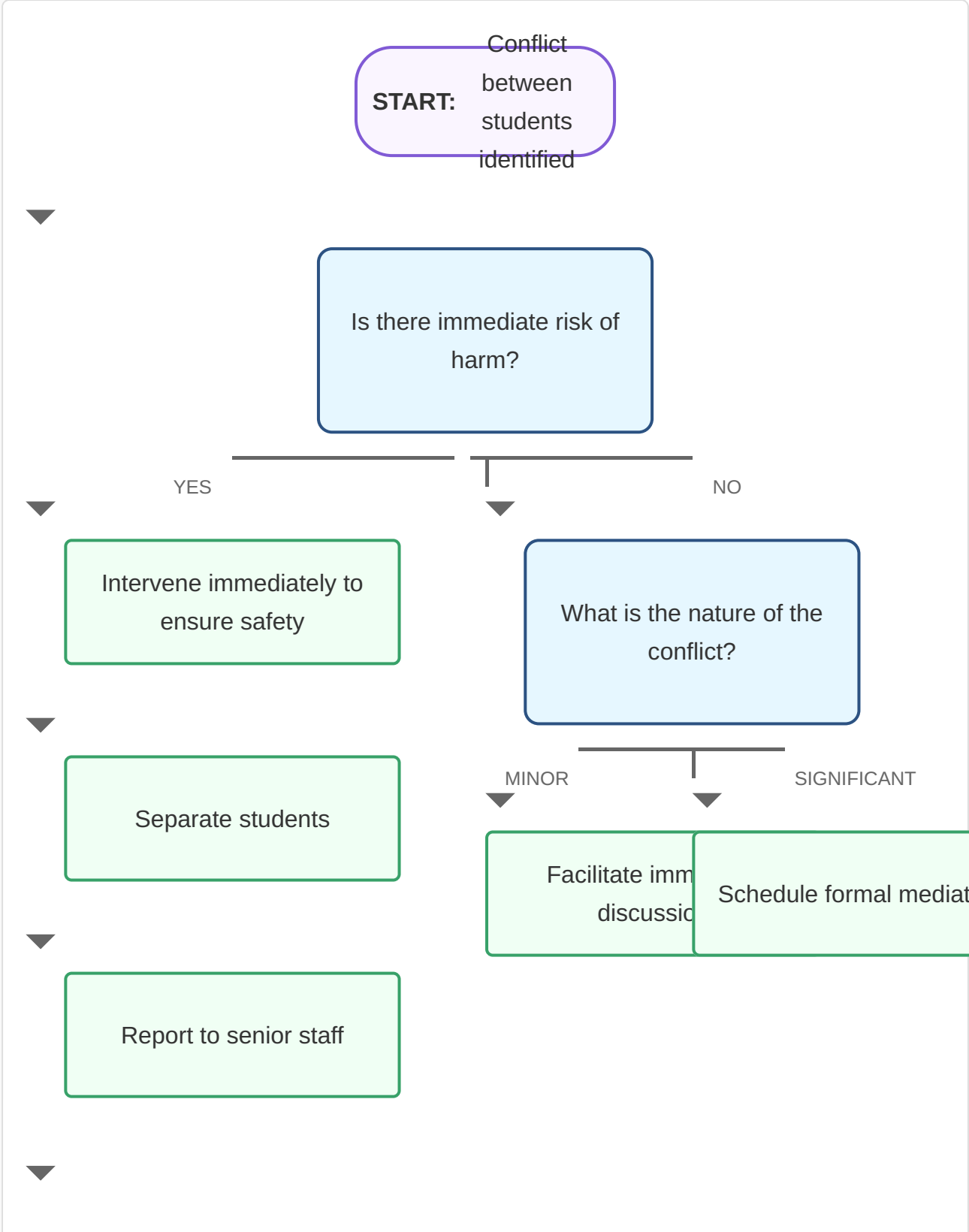


**Notes:**

- Homesickness is normal and usually temporary
- Avoid suggesting that the student can "go home if it doesn't work out"
- Focus on building connections within the boarding community
- Be patient and empathetic while encouraging resilience
- Watch for signs of depression or anxiety that may require professional support

# 5. Conflict Resolution Process

This flowchart outlines the process for resolving conflicts between boarding students.



Listen to each student's perspective separately

Identify underlying issues

Are both parties willing to resolve the conflict?

YES

NO

Bring students together for mediated discussion

Implement separation strategies

Establish ground rules for discussion

Involve House Parent/Head of Boarding

Guide students to find mutual resolution

Consider disciplinary action if appropriate



Document the conflict and resolution

Follow up with both parties separately

Has the conflict been resolved?

YES

NO

Monitor relationship

Escalate to senior staff

**END:** Document resolution

Consider parent involvement

Implement formal behavior management plan

**Notes:**

- *Remain neutral and avoid taking sides*
- *Focus on behaviors and feelings, not blame*
- *Teach conflict resolution skills throughout the process*
- *Consider cultural differences that may impact conflict resolution*
- *Use conflicts as opportunities for social-emotional learning*